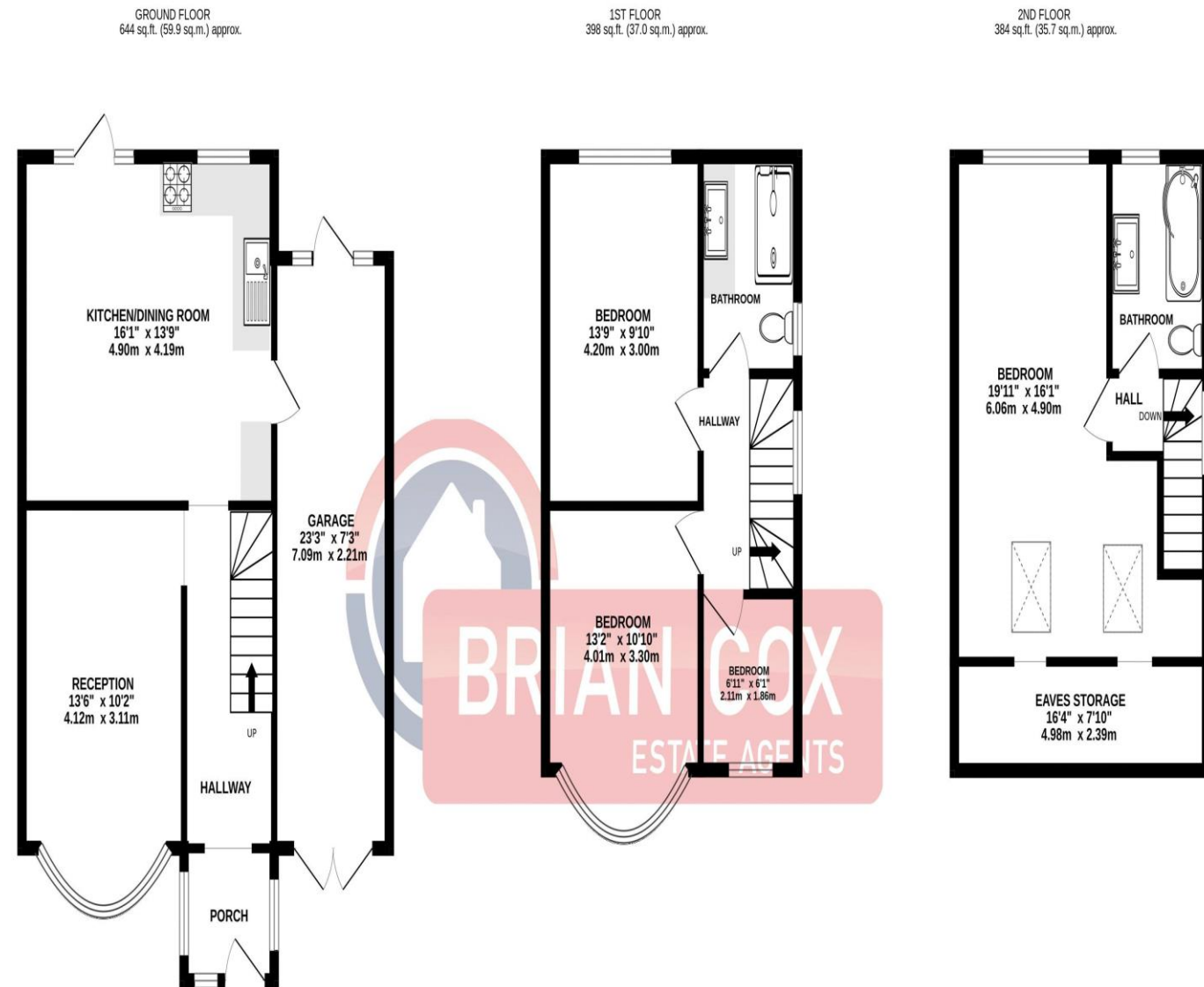


the floorplan...



TOTAL FLOOR AREA: 1427 sq.ft. (132.5 sq.m.) approx.

Whilst every attempt has been made to ensure the accuracy of the floorplan contained here, measurements of doors, windows, rooms and any other items are approximate and no responsibility is taken for any error, omission or mis-statement. This plan is for illustrative purposes only and should be used as such by any prospective purchaser. The services, systems and appliances shown have not been tested and no guarantee as to their operability or efficiency can be given.
Made with Metropix ©2026

more details from...

call: Brian Cox Greenford: 0208 578 1004
email: emma.gerlad@brian-cox.co.uk
web: www.brian-cox.co.uk



Consumer Protection from Unfair Trading Regulations 2008 We have not tested any apparatus, equipment, fixtures, fittings or services and so cannot verify that they are in working order or fit for purpose. You are advised to obtain verification from your solicitor or surveyor. References to the tenure of a property are based on information supplied by the seller. We have not had sight of the title documents and a buyer is advised to obtain verification from their solicitor. Items shown in photographs are not included unless specifically mentioned within the sales particulars, but may be available by separate negotiation. We advise you to book an appointment to view before embarking on any journey to see a property, and check its availability.



0208 578 1004
brian-cox.co.uk



Brian Cox Estate Agents are delighted to bring to the market this FOUR bedroom semi-detached family home. The property offers a generous and well-thought-out layout, with FOUR bedrooms, TWO bathrooms, there is ample space for each family member. The ground floor comprises a spacious entrance hallway, a bright reception room and modern fitted kitchen/dining room with access to the garage. To the first floor there are two generously sized bedrooms, a third bedroom currently being used as a study and a beautiful family shower room. To the top floor you will find the master bedroom with ample storage and a fully tiled family bathroom. To the rear of the garden there is an outbuilding and outside storage. Further benefits include off street parking, garage, gas central heating, double glazing and plenty of storage throughout. Viewings are highly recommended to fully appreciate all this wonderful home has to offer so call now to arrange yours!!



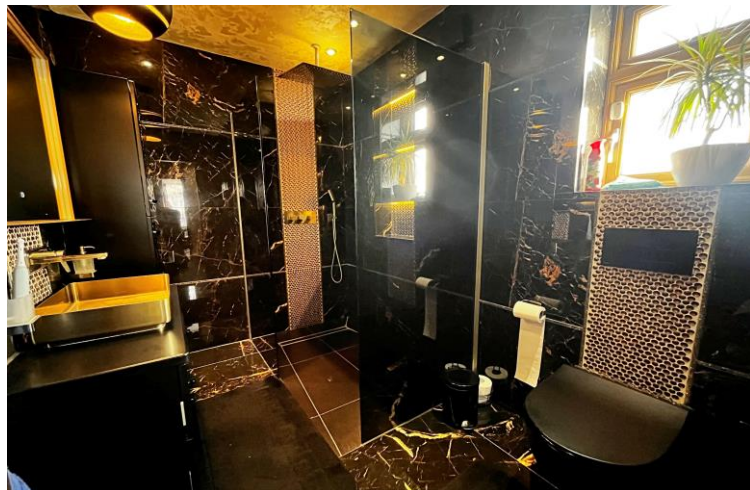
£765,000
Freehold

Farndale Crescent, Greenford, UB6 9LN



in brief...

- Four Bedroom
- Semi-Detached
- Private Rear Garden with Outbuilding
- Beautifully Presented Throughout
- Two Bathrooms
- Off Street Parking



the location...

nearest stations ...

South Greenford (0.7 miles)
Greenford (0.7 miles)
Castle Bar Park (1.1 miles)



Greenford is a large suburb in the London Borough of Ealing in West London, UK. It was an ancient parish in the historic county of Middlesex. It is 11 miles (18 km) from Charing Cross in Central London.

There are several local primary schools in the area which include Coston Primary School, Edward Betham Church of England Primary School, Stanhope Primary School and Oldfield Primary School.

If you have older children there are also local secondary schools nearby these include William Perkin Church of England High School, The Cardinal Wiseman Catholic School and Greenford High School.

